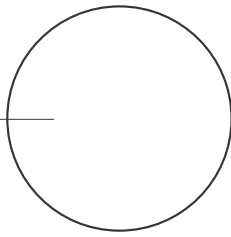
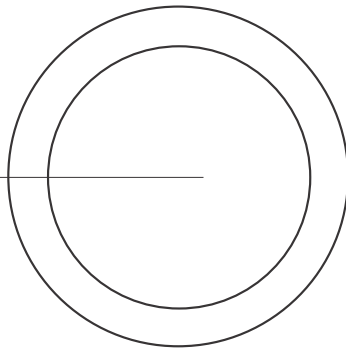


Back Panel

Hole for port



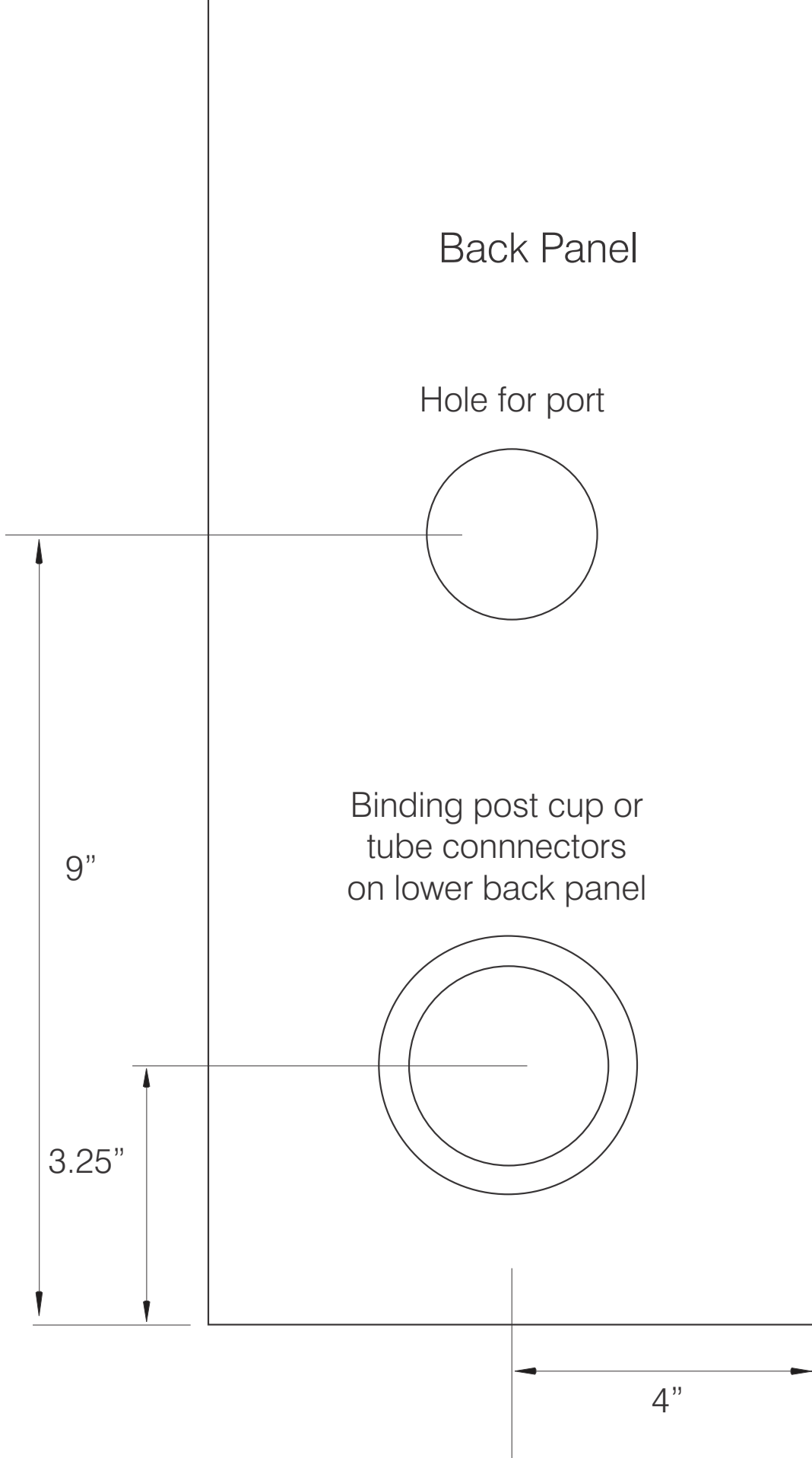
Binding post cup or
tube connectors
on lower back panel

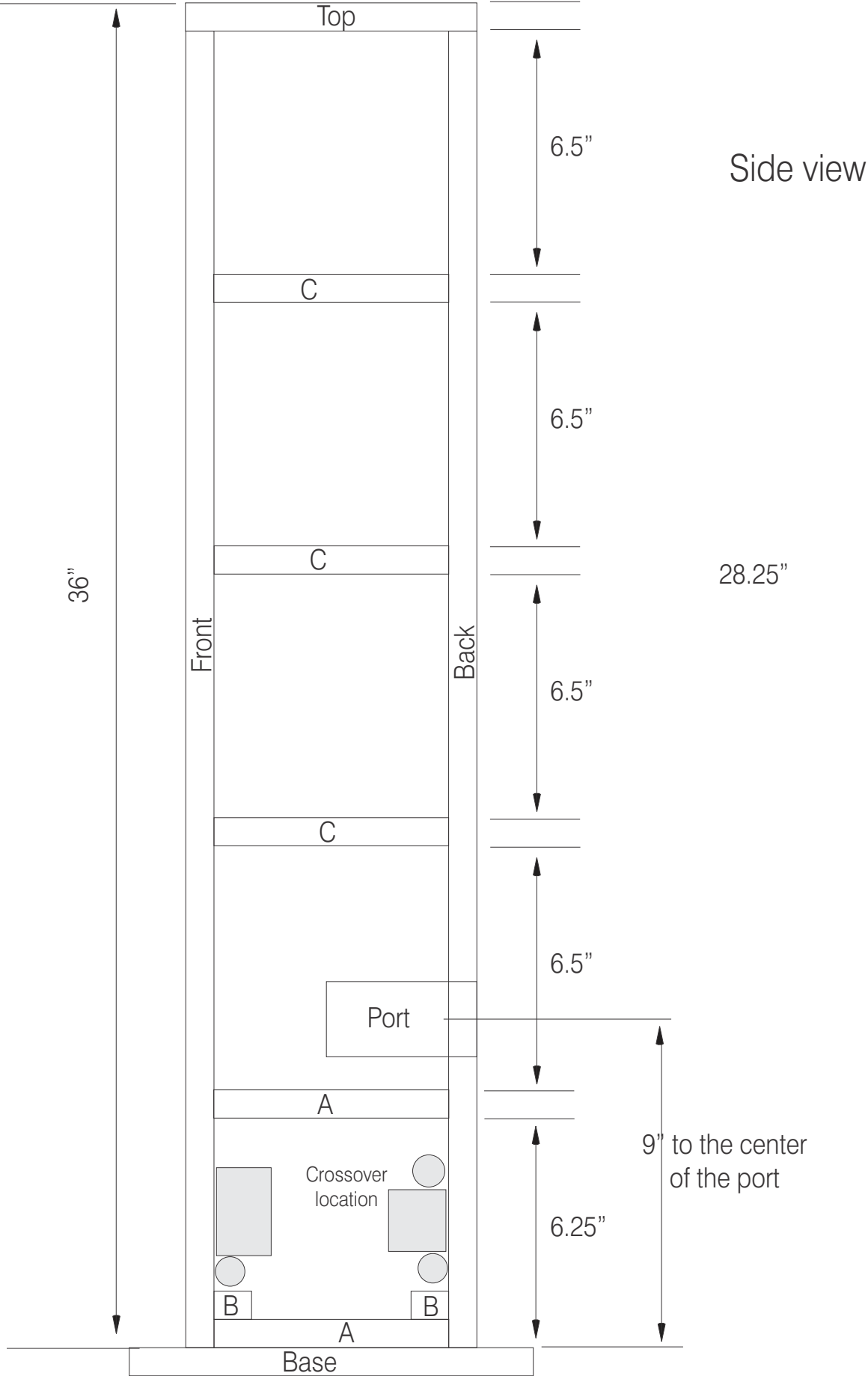


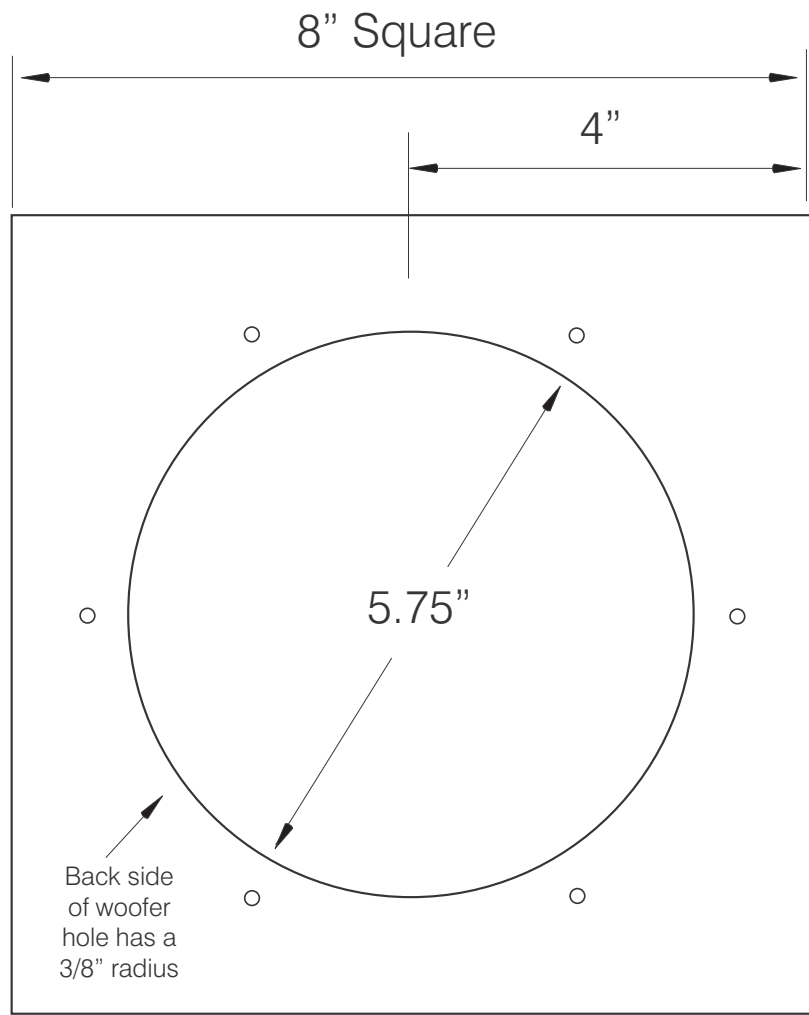
9"

3.25"

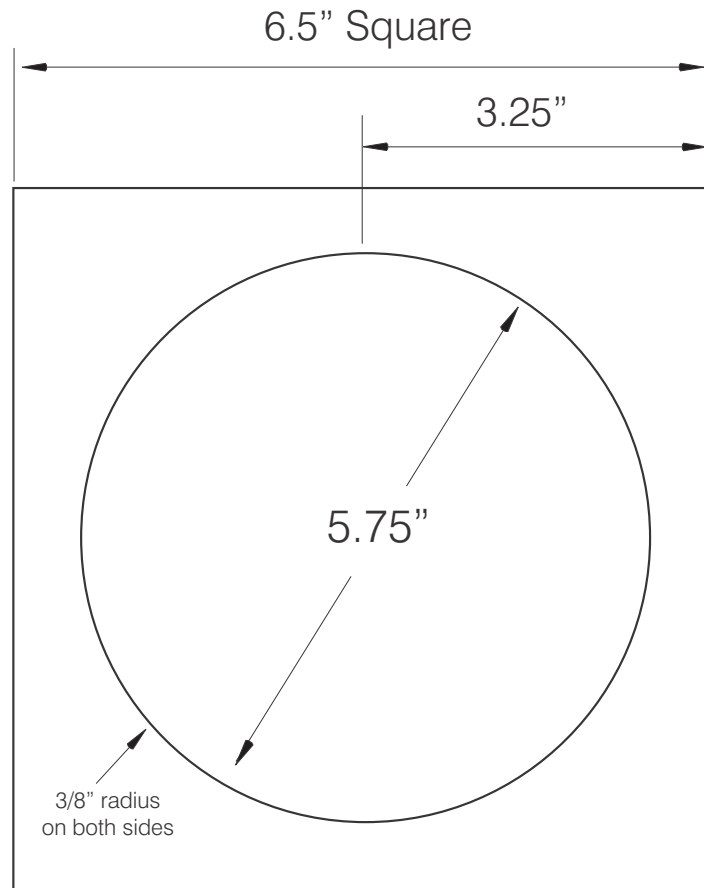
4"







Top



Brace C

Top: 8" by 8"

Front and back panels: 8" by 35.25"

Sides: 6.5" by 35.25"

Panel A: 6.5" by 6.5"

Brace B: 6.5" by 1"

Brace C: 6.5" by 6.5"

Base needs to be at least 10" by 10" but 12" by 12" is recommended.

Brace B gives the bottom panel something to screw into. It needs to be a removable panel to service the crossover network.

The base can then screw to panel A.