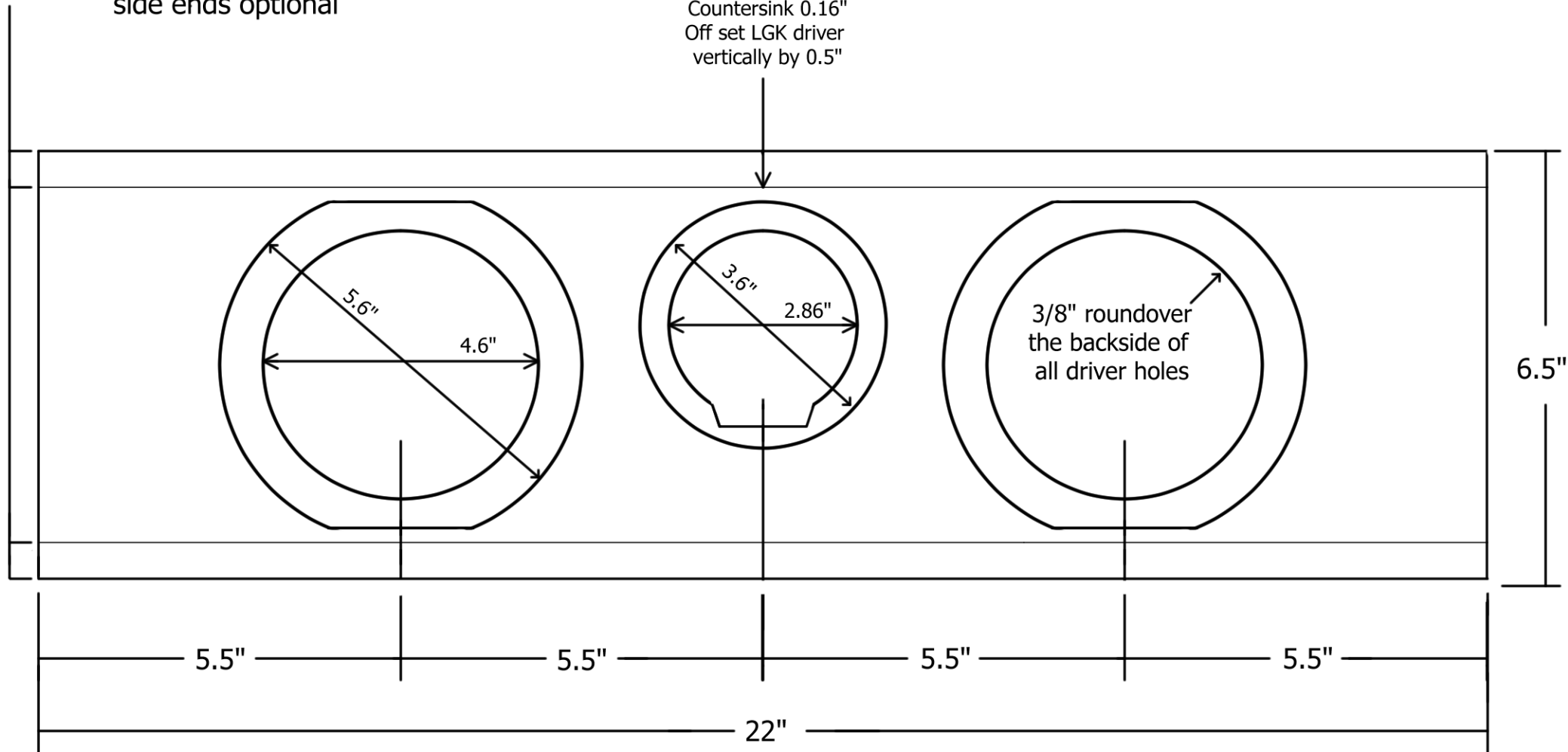


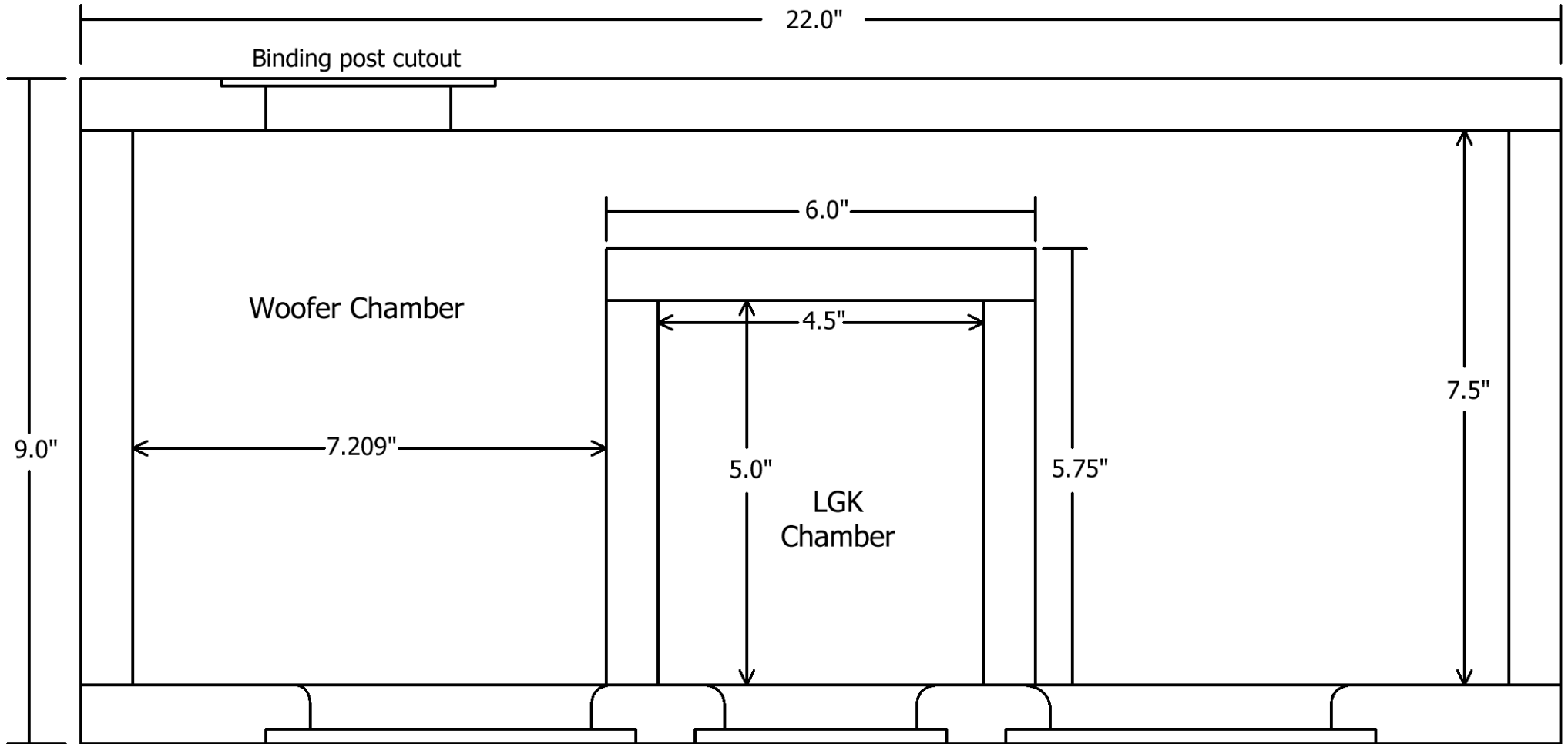
LGK 2.2 Cabinet plans

Round over top and bottom edges 3/8"
side ends optional

Countersink 0.16"
Off set LGK driver
vertically by 0.5"

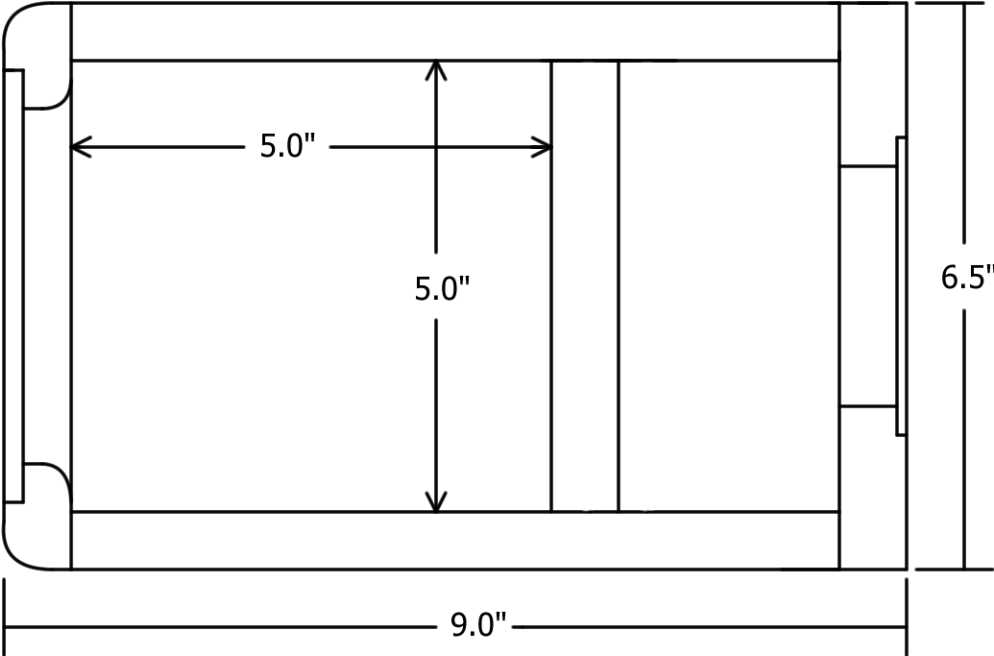


Top View

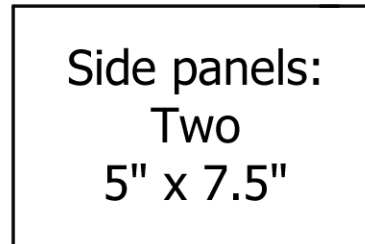
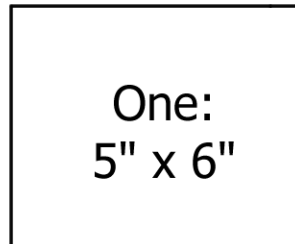
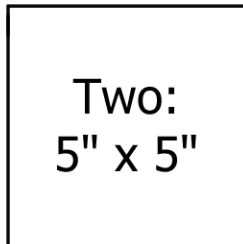
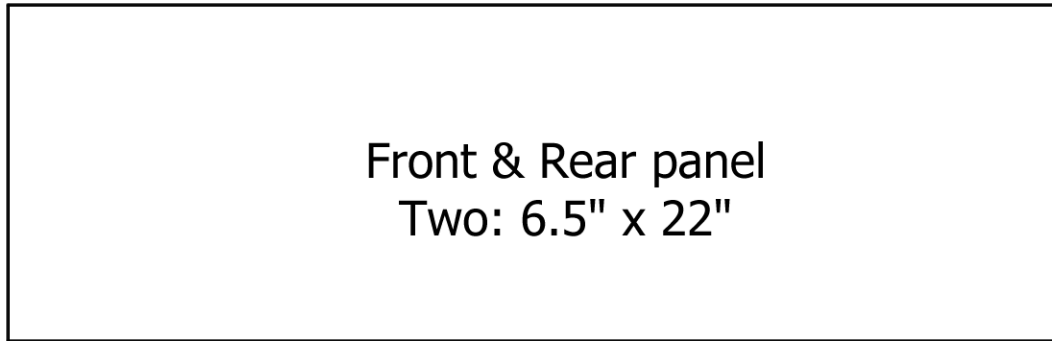


All panels are 0.75" MDF

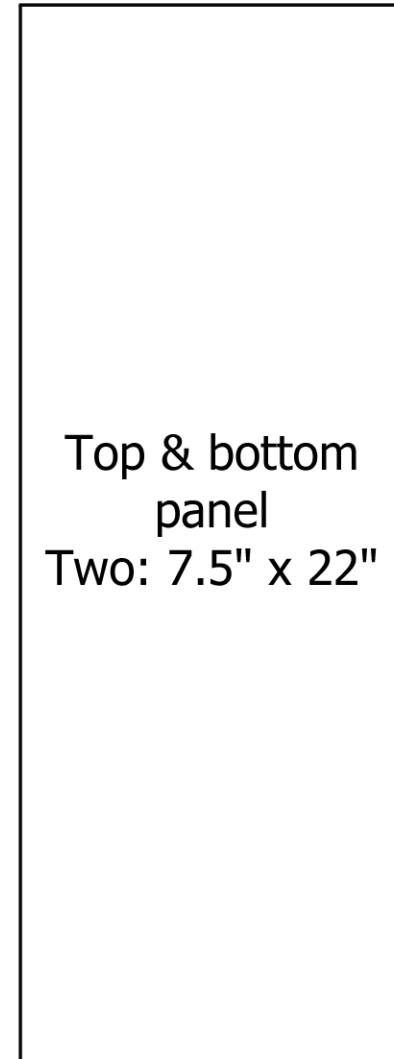
Side View



Cut Sheet



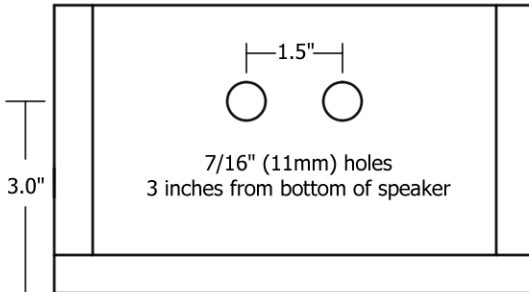
↑ ↑
Internal LGK chamber panels



All panels are 3/4 inch thick.

Rear Inputs

Tube connectors



Binding post cup

